



2022
—
2023

Whole School Parent Handbook

A Member Of
Swift
Academies



CONTENTS

Contents	1
Welcome	2
School Aims	3
Curriculum & Class Organisation	4
Student Support	6
Wellbeing Offer	8
Personal Development Journey	9
Educational Needs and Disabilities (SEND)	10
Careers	12
The School Day	13
School Holidays 2022-23 & 2023-24	14
Student Uniform	15
P.E. and Games Kit	16
Equipment	17
Medical Information/Injuries and Care Plans	18
Student Attendance	19
Additional Information	20
Home School Agreement 2023-28	22
Agreement for Examination Success 2023-28	24
The General Data Protection Act 2018	26

WELCOME

It is a privilege to welcome you to Hurworth School. Here you will gain some insight into the very essence of what is quite a remarkable school.

Hurworth School is an 11-16 school with academy status and is the lead school in the Swift Academies Trust, where it works in partnership with The Rydal Academy and Longfield Academy.

It is an honour to welcome you to Hurworth School and to be able to share the success of our students with you. We strive to ensure that all students achieve their very best academically, we are convinced that it is crucial to offer students the opportunity to develop and grow into confident, resilient and exceptional young people.



In order to achieve this we aim for our students to develop moral integrity and become responsible global citizens who demonstrate tolerance and a strong sense of responsibility towards each other and to those beyond their immediate community.

The journey students embark upon at Hurworth School brings change, challenge and opportunity: the response to which goes a long way to determining the student's quality of life upon leaving school. We strongly uphold that any success is due to the hard work and determination of students, staff and parents working collaboratively.

Hurworth School inspires excellence by its very nature, and we seek to fulfil the potential of all those involved in our unique and remarkable educational community.

We would welcome you to take time to come and visit the school during the day to see for yourselves what a remarkable place it is.

Rachel Somerville
Head of School

SCHOOL AIMS

At Hurworth our principal aim is to provide all students with an educational experience driven by the desire to "Achieve Excellence with Care". Our overriding aim is to support all our students to become the very best version of themselves.

Our ethical beliefs are based on our four core values:

- Relationships
- Resilience
- Respect
- Responsibility

These core values are underpinned by five identified areas that together provide an overarching framework for all areas of school life:

- Opportunities
- Success
- Learning
- Expectations
- Character

We have created a set of non-negotiable expectations which both staff and students adhere to on a daily basis.

Our core values allow our students to be responsible and resilient lifelong learners who strive for excellence by developing positive relationships and learning to respect themselves and those around them.

The warm and welcoming family feel to the school is an important part of its identity and we have high expectations of our students in all aspects of school life. We believe that the development of character is an essential part of learning and we will provide opportunities for all of our students to experience success.

The highest standards are expected from our students and we firmly believe that a strong parent/carer-school partnership is essential as we work together to meet the needs of each child, provide them with the very best education possible and celebrate their successes.



THE CURRICULUM

At Hurworth School we provide a broad and balanced curriculum that ignites students' love of learning and successfully unlocks the true ability of each individual.

Our knowledge-rich curriculum helps us to develop life-long, independent and resilient learners. Every department has an ambitious curriculum which ensures all students are challenged to be the best version of themselves. Quality first teaching ensures students' individual needs are met by breaking down barriers to learning and allowing students to be supported to reach their full potential. The curriculum is designed to inspire our students and prepare them for their future roles in society.

We aim to create well rounded citizens through our personal development programme and by teaching our character non-negotiables. The school offers a wide range of extra-curricular and leadership opportunities that students can choose to take part in.

Key Stage 3

Students entering the school at the beginning of Year 7 will study the following subjects throughout their first three years in the school:

English, Mathematics, Science, Spanish, Design and Technology, History, Geography, Religious Studies, Music, Art, Computing, Physical Education and Personal, Social, Health, Citizenship Education (PSHCE).

For each subject students will follow a departmental learning journey which identifies the non-negotiable knowledge, allowing them to see when they are studying topics so they can make connections between them.



Regular Independent Learning Tasks (ILTs) are set for all year groups, these are designed to both broaden and reinforce learning through retrieval and the development of revision skills, with independent study the key focus of the tasks. These tasks help your child to develop positive study skills, encouraging them to take responsibility for their own work and allowing you to learn more about what your child is studying at school.

Key Stage 4

At Key Stage 4 the curriculum ensures that all student needs are met and they are prepared for post-16 life via a wide range of Academic GCSEs, Vocational Courses and Unit Awards.

Students select options from a list of subjects. Option groups are mixed ability and based on the combination of students' choices and the school's ability to meet their choices.

Targets for each subject are set and will be reviewed every term in Progress Review meetings. This information will be published to parents/carers, along with comments with regard to how secure a student's knowledge is against the non-negotiable knowledge identified in the KS4 curriculum journey and details any gaps in knowledge a student has, with information about how these gaps can be addressed.

Students will be assigned an academic mentor in Year 10. The mentor will work closely with their mentees to monitor their academic progress. Support strategies can be put in place, as required, to ensure that each and every student is working to their full potential.

Students receive Careers Education in all year groups so they are able to make informed decisions about their post-16 destinations.

CLASS ORGANISATION



Students in Key Stage 3 are put into sets which are reviewed regularly to ensure that students are making good progress. Students are set on entry to the school based on Key Stage 2 information and internal baseline assessments (English and Maths, as well as Cognitive Ability Tests). This allows the curriculum to be delivered at the appropriate pace so that all students' needs can be supported in order for them to reach their full potential.

Sets are reviewed throughout the year, using a combination of teachers' continual assessment and test results. This allows us to alter the set of a student if teachers feel that such a move is justified.

Our Progress Review procedures mean that students are encouraged to understand their own progress and take responsibility for their learning. This awareness is a vital aspect of the school's policy towards target setting.

In Key Stage 4 students are in Option classes which vary in size depending on the subject. Both English and Maths have smaller class sizes in Key Stage 4.

Hurworth School is committed to ensuring that all students are offered equal opportunities throughout their time with us.

STUDENT SUPPORT

Hurworth School seeks to achieve excellence with care. Positive behaviour will maximise learning in all areas and enable students to reach their full potential and give them the best opportunity to fulfil a meaningful role in society once they have left school. We have a comprehensive behaviour and support package which allows students to be the best versions of themselves.

The school has a simple values charter that was developed with contribution from student voice which is reviewed and updated annually. The message is clear and present in school publications and in every student planner and areas of the school. This is central for our policy to uphold British Values within school.

The Values Charter is the key values and aims that we work to everyday, it provides guidance on everything we should do in the school day. It can be found on the school website: <https://hurworth.swiftacademies.org.uk/policies/>

Rewarding Students

At Hurworth, we want all students to achieve academic success both in their classwork and in ILTs, but also to do well in their personal development. We want to celebrate when our students demonstrate their resilience, respect, responsibility and relationships i.e. our school core values. Rewards at Hurworth are recorded using ClassCharts.

How to achieve the positive ClassCharts clicks:

Tutors will reward correct uniform and equipment for their tutees. In each of the 5 lessons students have the opportunity to achieve (at least) 2 positive rewards based on meeting classroom expectations. In addition to these, students may receive 'student of the month' award from one of the curriculum areas. Any extra-curricular activities that students take part in are also recognised in the rewards.

What does it mean for students:

'Student of the month' is celebrated in department Instagram posts, with names on display in the Student Message PowerPoint and displayed within the classroom.

On a Monday morning the students from each form with the highest/most improved ClassCharts wheel are rewarded with a chocolate bar.

Positive ClassCharts clicks are available for the students to 'spend' in the ClassCharts shop, which is regularly updated with items such as footballs, 'skip the queue' lunch passes, stationary packs and a variety of other rewards.



Finally, the ClassCharts clicks feed into the end of term rewards which are cumulative:

- Students will be able to access free non-uniform and other planned events
- Receive an electronic postcard home detailing the number of green clicks accumulated and any subjects the student was awarded Student of the Month for
- Receive a physical postcard home detailing the number of green clicks accumulated and any subjects the student was awarded Student of the Month for
- Seasonal treats such as free ice cream
- Highest scorers could also receive Amazon vouchers

Student voice leads any change for rewards both for the end of term celebrations and the items available within the ClassCharts shop. Parents/Carers can monitor student's ClassCharts wheel using parental logins.

Behaviour

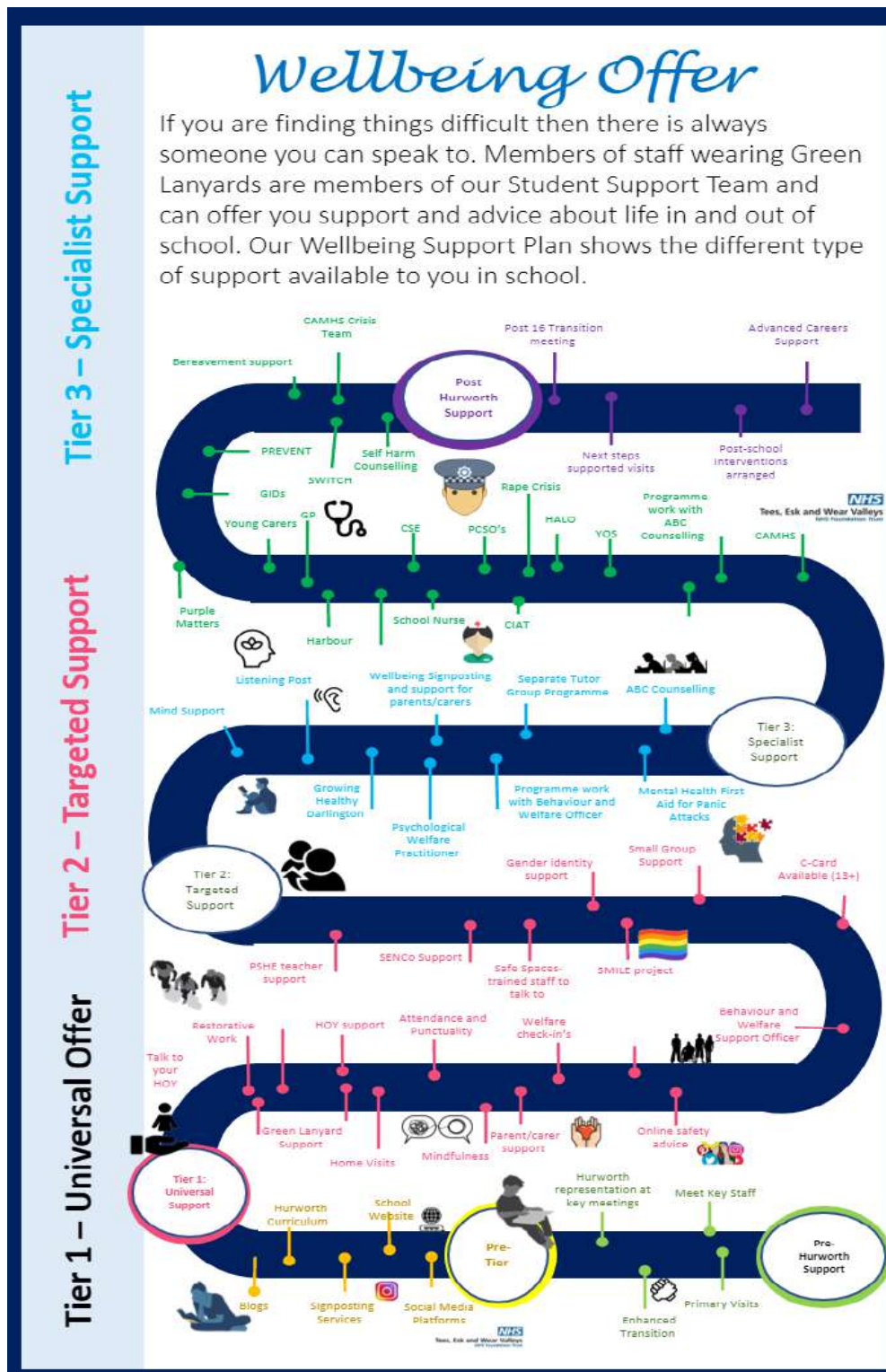
To assist in the management of student behaviour our staff use the ClassCharts systems to log behaviour incidents that have occurred. This ensures that learning is maximised and the responsibility for a choice of behaviour lies with the student. If a student does something which impacts on the learning of others, a teacher can issue a C1, C2 and C3 – each of which come with different sanctions attached to them. When your child starts at Hurworth School parents/carers are issued with parental logins so that they can review the reward and behaviour clicks of their child.

Form Tutor Team

Each student will be allocated a form tutor who will most likely stay with them for their entire time in school. This allows students to build a positive relationship with a member of staff and provides another person to support students while at school. We have a morning registration everyday where students will be with their form tutor completing activities as a form.

WELLBEING OFFER

Our welfare package can be seen on the below diagram. This highlights all the internal and external support that can be provided to students while they are on their journey with us:



EDUCATIONAL NEEDS AND DISABILITIES (SEND)

We recognise that at some point in any student's time at Hurworth School, an individual may require additional support to reach their potential. Regardless of the need and the length of time for which support is required, the school will aim to meet that need wherever possible. If this support cannot be provided by our experienced and highly-qualified staff then we will seek external specialist support.

Objectives of the School's SEND Provision

- To ensure access to a broad, balanced and relevant curriculum for all students, with continuity across all Key Stages
- To identify students with additional needs and disabilities
- To identify the nature of the additional need or disability and to implement appropriate learning, behavioural and social skills programmes to meet that need as far as resources will allow
- To encourage a parent/carer, school and student partnership with the student at the centre of the SEND review process
- To promote effective liaison between the Leadership Team, Department Heads, staff, parents/carers and outside agencies
- To support all staff in delivering the National Curriculum to all students
- To ensure that SEND is represented on all relevant school bodies
- To support students with SEND at important transitions such as Year 11 to Post-16
- To facilitate opportunities to work towards the Preparing for Adulthood agenda from Year 7
- To promote independence and participation in all areas of school life
- To celebrate diversity and help students understand the various needs of others



We are recognised as an inclusive school and we are very proud of our reputation.

In developing this offer, students with SEND are understood to be those students with or without Educational Health and Care Plans who have difficulties in participating in those curriculum experiences which they could have expected to share, had the particular difficulty not existed. They will include students who have difficulty with: Communication and interaction; physical and/or sensory; social emotional and mental health; and cognition and learning.

The school works in line with the Code of Practice principles in that:

- SEND issues are addressed
- There is recognition of a continuum of needs and provision
- Students will be given the greatest possible access to a broad and balanced education
- Liaison with the Local Authority, Health and Social Services will take place as appropriate to the need of the child

Resource Provision for Students on the Autism Spectrum

As a part of our commitment to providing an inclusive education, we have an additional resource for up to 14 students with an EHCP who are identified as having significant needs due to their autism. We aim to provide a high level of support, enabling all students within this provision to access a broad and balanced curriculum within mainstream education.

Students who are supported by the Resource Provision access their curriculum mainly in standard school teaching sets. Students also attend withdrawal intervention lessons in small groups or on a one-to-one basis in a specified quiet room. During these lessons we aim to develop students' skills using the support of experienced specialist staff. These skills taught may include life skills, language and communication skills and a range of social skills.

The Resource Provision Manager also coordinates the Local Authority's Social Communication Outreach Support Service [SCOS]. This advisory service involves a small team of staff who work with staff and students in mainstream Primary and Secondary schools across Darlington.

Further detailed information about the SEND provision at Hurworth School can be found by following the Special Educational Needs link on the school website.



CAREERS

The main objectives of Careers provision at Hurworth School are to:

- Prepare students for life post-education
- Develop an understanding of different career paths
- Develop an understanding of the differences between school and work
- Inspire students to chase and achieve their dreams
- Help students to access information on the full range of post-16 education and training opportunities
- Support students after leaving school
- Offer targeted support for vulnerable and disadvantaged young people
- Instil a healthy attitude towards work

Hurworth School has achieved the Investors in Careers Award and is committed to maintaining this quality status. Hurworth School is currently in the re-accreditation process. We use the eight Benchmarks of good career guidance, developed by the Gatsby Charitable Foundation, to set a standard of excellence.

Full details of the Careers offer for each year group can be found within the Student Entitlement Booklet on our Careers website:

<https://careers.swiftacademies.org.uk/>

Preparing students for life after school is embedded in our enrichment programme. Trips to colleges, skills workshops, business challenges and meeting with employers are all part of the Careers programme.

We are proud of our students' progression to positive and sustained destinations such as apprenticeships, technical routes, school sixth forms, sixth form colleges, further education colleges, universities and employment.



Penny Hudson is the Careers Lead for the school and is qualified in Careers Advice and Guidance. Guidance interviews take place for all Year 9 and Year 11 students. Penny is available to meet with parents by appointment; she also attends Year 9 Option evening and hosts information evenings on post 16 choices.



THE SCHOOL DAY

Activity	Start	End
Starting to move towards form - bell rings	8.50 a.m.	
Registration activities/Assembly	8.55 a.m.	9.20 a.m.
Period 1	9.20 a.m.	10.20 a.m.
Period 2	10.20 a.m.	11.20 a.m.
Break	11.20 a.m.	11.35 a.m.
Period 3	11.35 a.m.	12.35 p.m.
Lunch	12.35 p.m.	1.25 p.m.
Starting to move towards form - bell rings	1.20p.m.	
Period 4	1.25 p.m.	2.25 p.m.
Period 5	2.25 p.m.	3.25 p.m.
Comfort break before journey home, collect mobile phones etc	3.25 p.m.	3.30 p.m.
End of School Day	3.30 p.m.	

(Subject to change)

SCHOOL HOLIDAYS

2022-2023

	Break Up	Return to School
Autumn Term		Tuesday 6 th September 2022
October Half Term	Friday 21 st October 2022	Tuesday 1 st November 2022
Christmas Holidays	Tuesday 20 th December 2022	Wednesday 4 th January 2023
February Half Term	Friday 17 th February 2023	Monday 27 th February 2023
Easter Holidays	Friday 31 st March 2023	Tuesday 18 th April 2023
May Day	Monday 1 st May 2023	
May Half Term	Friday 26 th May 2023	Monday 5 th June 2023
Summer Holidays	Wednesday 20 th July 2022	

2023-2024 – dates subject to change

	Break Up	Return to School
Autumn Term		Tuesday 5 th September 2023
October Half Term	Friday 27 th October 2023	Tuesday 7 th November 2023
Christmas Holidays	Tuesday 19 th December 2023	Thursday 4 th January 2024
February Half Term	Friday 16 th February 2024	Monday 26 th February 2024
Easter Holidays	Wednesday 27 th March 2024	Monday 15 th April 2024
May Day	Monday 6 th May 2024	
May Half Term	Friday 24 th May 2024	Monday 3 rd June 2024
Summer Holidays	Tuesday 23 rd July 2024	

STUDENT UNIFORM

As a school, we believe that uniform is important in creating a positive approach to study and care in personal presentation. As such, parents/carers are requested to give their full support to the school in adhering to the range of uniform requirements. Students who attend school with incorrect uniform will receive sanctions in line with our conduct policy.

A Summer Uniform is worn in the Summer Term and the first part of the Autumn Term. Students then wear a Winter Uniform in the second part of the Autumn Term and the Spring Term.



Items and colours of clothing are as follows:

- Trousers must be plain black, standard fit and not be made from denim, corduroy, leather, lycra or other expandable material. Leggings, jeggings, black jeans or $\frac{3}{4}$ trousers are not permitted. All students must wear trousers as skirts have been removed from the permitted uniform.
- Plain white shirt not a T-shirt or blouse – this is only worn whilst in Winter uniform.
- School tie, this must cover the top shirt button (ties other than school ties are not to be worn) – this is only worn whilst in Winter uniform.
- Maroon Summer Polo Shirt – this is only worn whilst in Summer uniform.
- V-necked sweater with school logo.
- Black shoes with heels no higher than 4cm. Trainers and plimsoll shoes are not acceptable and neither are leisure boots such as Rockport, Doc Martins and Ugg boots. Plain black low heeled boots (Chelsea boot style) may be worn. Shoes must be plain black and not have stripes or logos of any kind visible. Shoes cannot have coloured or metal buckles or decoration on them.
- Jewellery – only one small stud per ear lobe and in no other part of the ear, and one watch. No other jewellery or body piercing is permitted.
- **No jewellery** is to be worn during PE lessons, this includes recently pierced ears (it is not acceptable to cover them with plasters). We advise for piercings to take place at the start of the 6 weeks holiday to allow healing to take place.
- No coloured or fake nails are permitted. Nails should be of a reasonable length.
- Make up must be kept to an absolute bare minimum and must be natural looking.
- False eyelashes are not permitted.
- Coats should be an appropriate outdoor coat – no sweatshirts, hooded tops, cardigans, tracksuit tops or coats made of denim.
- Hair styles/eyebrows must not have any lines, patterns or symbols showing and no extreme hair dyes (hair must be of a natural colour/multi coloured hair is not acceptable for any student).
- A school bag large enough to carry an A4 file must be carried every day.

The decision when students will transfer from winter to summer uniform will be taken by the Head of School and will be communicated to parents/carers via letter. There will be a minimum of 2 weeks notice given prior to uniform change.

P.E. AND GAMES KIT

- Maroon sports top with school logo.
- Black shorts or black leggings with school logo *please note that leggings other than the school ones are not acceptable.*
- Maroon socks.
- Black fleece (optional).
- Black waterproof top (optional).
- Football boots – football and rugby lessons only.

All uniform with school logos/colours, i.e. sweater, ties, summer polo shirts, PE Kit, is available from Elizabeth's Embroidery. This can be purchased online at www.elizabethsembroidery.co.uk password HURWORTH. They also stock black trousers and white winter shirts, although these can be purchased elsewhere.

You can also visit the shop where items can be tried on for size and ordered, at 8-10 Richardson Road, Stockton-on-Tees. Tel: 01642 674973.



EQUIPMENT

There are certain essential items students need to bring to school each day. In order to carry them, and any additional books or equipment specific to any particular day, a bag big enough to hold an A4 sized folder is required.

There are a limited number of private lockers available for students use. Students may go to these lockers at break or lunchtime but not during lesson change over.

Essential items

- Pencil case
- Blue or black pens
- Pencil
- Pencil sharpener
- Ruler
- Eraser
- Calculator (available to buy from the Maths department)
- A reading book
- Student planner (issued by school)

Certain items are strictly prohibited from school grounds, including:

- Alcohol or drugs, including cigarettes and vapes
- Weapons of any kind, including any form of gun (imitation / bb / air)
- Knife or sharp bladed objects
- Laser pens

If students are found with any of the above items, serious sanctions will be imposed.

Chewing gum and any fizzy/energy drinks are also not allowed in school and will be confiscated and destroyed.

It is important to note that the governors and staff of Hurworth School **DO NOT ACCEPT LIABILITY FOR DAMAGE/LOSS TO PROPERTY BROUGHT INTO SCHOOL.**

The same liability applies to school trips and visits.

MEDICAL INFORMATION/INJURIES AND CARE PLANS

If your child has a medical condition such as Asthma or Diabetes or has suffered an injury and requires treatment in school, a care plan and/or risk assessment may need completing, please contact the school office for further details. It is parent/carers responsibility to inform school of any medical needs.

Nuts and Allergens

We have a duty of care to all students, we will work together to minimise the risks to students by asking parents not to send in items in packed lunches marked 'does contain nuts' or 'contains peanuts'; lunchtime staff will be alert to obvious signs of nuts being brought into school and any nut/nut products found to be brought into school, will be bagged up and returned. The student who has brought in nuts/nut products will be asked to wash his/her hands after eating (foods not permitted include: packs of nuts, peanut butter sandwiches, Nutella, chocolate bars containing nuts and cakes with nuts in them).



STUDENT ATTENDANCE

Your co-operation in ensuring regular attendance and punctuality is essential. When an absence occurs, **parents/carers are requested to contact school on each morning of their child's absence from school.** Should the absence be prolonged, please let the school know.

Key Points to Remember

- Whilst it is right that schools recognise that individual students and families may have occasional problems, we expect regular attendance.
- Lateness is not acceptable.
- Where a student is absent without prior authorisation, an explanation is required.
- We are not obliged to accept parental notes where there is reason to doubt the validity of the explanation offered. For example, shopping trips within school hours are not acceptable or explanations such as 'minding the house', looking after siblings etc., are not acceptable reasons for absence.

The school operates a First Day Contact Policy. The school will make every effort to contact parents/carers on the first day of absence. If we cannot make contact, a home visit will be made. If your child is absent for more than 3 days, a home visit will also be made.

Under current regulations school cannot authorise holidays during term time. A leave of absence form must be provided in advance of a holiday. You may face a fixed penalty notice from the Local Authority if you do take your child on holiday during term time.

The attendance percentage will be calculated from the start of the new school year. Where unagreed holidays have taken place, the school will work with the Local Authority Early Help intervention team to impose legal sanctions where appropriate, with regard to holidays, using a two-stage process. Any further clarification can be obtained from the school.



ADDITIONAL INFORMATION

Hurworth School Admissions Policy 2023-24

Hurworth School is a popular, successful school which is consistently over-subscribed. The school caters for students from the ages of 11 to 16 and is located in the village of Hurworth. The school prides itself on its pastoral care and its first class academic record; a winning combination which resulted in the school being deemed as “outstanding” in all areas of provision in its most recent OFSTED inspection.



The school will admit up to 127 students who are moving from primary to secondary school. Applications for places will be made in accordance with the Local Authority’s co-ordinated admission arrangements and must be made on the application form (Form A) in the back of the Local Authority’s Guide for Parents or by applying online on the Council’s website.

For more information, please view the Hurworth Admissions Policy:

<https://hurworth.swiftacademies.org.uk/policies/Admissionspolicy23-24>

Further information can also be found:

<https://www.gov.uk/schools-admissions>

<https://www.darlington.gov.uk/education-and-learning/school-years/admissions/>

Home to School Transport

Whilst we endeavour to provide home to school transport for eligible students, it is a parent/carers responsibility to get their child to school and your preference for a school should not be affected by the availability of transport.

Children living within the following wards (Middleton St George, Middleton One Row, Neasham, Bishopton, Sadberge, Great Stainton, Little Stainton and the rural areas of Sockburn, Low Dinsdale & Hurworth Moor) will qualify for “School Transport.”

Children living in the Firthmoor area (as defined on the map which lies South of Harris Street) will qualify for “School Transport” if their application for a place at Hurworth School is successful, under the sibling link or distance criterion.

Please note that school transport will be available for children living in the areas outlined in the school’s admissions policy. For further information, please see our website:

<https://hurworth.swiftacademies.org.uk/students/transport/>

Charging and Remissions Policy

The school does not charge students for essential curriculum experiences, although parents/carers may be asked to make a contribution to specific curricular activities that take part during the school day e.g. theatre visits. Parents/Carers may be charged for extra-curricular activities e.g. visits abroad. We also have access to Darlington Education Fund which has in the past helped fund events for individuals.

ParentMail/SIMs InTouch

The school uses both 'ParentMail' and SIMs InTouch communication system. ParentMail is a comprehensive system that aims to keep parents/carers informed about up and coming events or attendance via text and email. New parents/carers will be encouraged to sign up to this system. The system will also allow you to make payments to the school on-line. Reports and other communications are sent via SIMs InTouch.

School Meals

A cafeteria meals system operates in the school and a wide variety of dishes, both hot and cold are available, as well as snack meals. Items are priced individually, and students pay for their purchases using their thumb prints at a number of tills. A "healthy eating" policy is pursued by the school and is encouraged through curriculum programmes within Hurworth School. During morning break, hot drinks and a variety of snacks are on sale in the Dining Hall.

School Security

Visitors to the school must sign in and wear a coloured lanyard. ALL members of staff know to stop and question any unfamiliar person in the building without a lanyard. Students are supervised during break times, lunchtime and at the beginning and end of the school day.

The local police advise the school on security issues and talk to the children during the school year. The school is fully alarmed and the system is reviewed annually.

The school premises and hardware are protected by Smart Water security.

HOME SCHOOL AGREEMENT 2023-28

The home school agreement is issued to every new student and their parents/carers when they begin their time at Hurworth. We place a great deal of emphasis on this document and refer to it many times during each child's time here. It is also equally important to staff as we have an obligation to provide the very best education possible to each and every child.

The Parent(s)/Carer(s) - I/we shall:

- Ensure that my child goes to school regularly, on time and properly dressed and equipped
- Notify the school if I know about any concerns or problems that might affect my child's work or behaviour
- Support the school's policies and guidelines for behaviour
- Support my child in their Independent Learning Tasks
- Attend Parents' Evenings and discussions about my child's progress
- Find out about my child's life at school
- Ensure my child adheres to the classroom expectations, break and lunch time and transport guidelines in the Hurworth School Values Charter

Hurworth School - The school will:

- Care for your child's safety and happiness
- Provide a comfortable, safe environment in which to work
- Ensure that your child achieves his/her full potential as a valued member of the school community
- Provide a balanced curriculum and meet the individual needs of your child
- Achieve high standards of work and behaviour through building good relationships and developing a sense of responsibility
- Keep you informed about general school matters and about your child's progress in particular
- Be open and welcoming at all times and offer opportunities for you to become involved in the daily life of the school
- Provide a high standard of education for your child in all subjects, thus enabling him/her to achieve his/her optimum potential
- Provide support for your child in the completion of all necessary classwork, coursework and Independent Learning Tasks. This may include support from the SEN department
- Liaise regularly with each student and his/her parents/carers regarding progress, and put strategies into place to improve chances of academic success
- Provide a series of additional lunchtime, after school and revision classes deemed necessary by the school to ensure each student achieves the highest possible performance in public examinations

- Provide students with Academic Mentors in Years 10 and 11 to support them in optimising their potential

The student - I shall:

- Attend school regularly and on time
- Adhere to the classroom expectations, break and lunch time and transport guidelines in the Hurworth School Values Charter
- Bring all the equipment I need every day
- Attend all additional lunch time, after school and revision classes deemed necessary by the school
- Complete all necessary classwork, coursework and Independent Learning Tasks by the given deadlines and to the prescribed standard of the Hurworth School Home School Agreement

I/We have read the Home School Agreement and undertake to support the arrangements set out.

AGREEMENT FOR EXAMINATION SUCCESS 2023 – 2028

The School hereby promises to:

- Provide a high standard of education for the student in all core subjects, thus enabling students to achieve their optimum GCSE and Vocational grades.
- Provide support for students in the completion of all necessary classwork, coursework and Independent Learning Tasks as appropriate. This may include the support of the SEND department.
- Provide a comfortable, safe environment in which to work.
- Liaise regularly with students and their parents/carers regarding progress and put into place strategies to improve the student's chances of success.
- Provide a series of additional lunchtime, after school and revision classes deemed necessary by the school to assist the student in the improvement of grades (see statement overleaf). Please note 'after school' is defined as outside normal school hours (09.00-15.30) and during school holidays.

The Parent/Carer(s) hereby promise to:

- Support your child through their crucial last year of compulsory education, assisting where possible with study and providing a quiet place for your child to work at home where possible.
- Ensure your child's attendance at those additional lunch time, after school and revision classes deemed necessary by the school (see statement overleaf).
- Liaise regularly with the student's Head of Year and/or mentor about progress and assist the student and the school with remedial work should there be a need.



The Student hereby promises to:

- Attend all additional lunchtime, after-school and revision classes deemed necessary by the school. (see statement below)
- Complete all necessary classwork, coursework and Independent Learning Tasks by the given deadlines.
- Conduct themselves appropriately in all lessons and in unstructured times
- Meet regularly with their mentor to discuss progress, and make improvements where necessary.

After-School and Lunchtime Classes

As part of our Year 11 Agreement to Examination Success, we run additional one hour lessons at the end of the school day on a Monday, Tuesday, Wednesday and Thursday (please note that your child may be involved in one, two, three or four of these sessions per week depending on their individual need) and at lunchtimes each day (again the number of classes your child will need to attend will be based upon their individual need) for the whole of your child's time in Year 11. The additional lessons after school begin at 3.30pm and end at 4.30pm. Lunchtime sessions will be at the discretion of the teachers and generally last for approximately 30 - 40 minutes.

We see these extra lessons as vital in optimising your child's potential and we ask you to ensure that your child attends when requested. During the lessons your child will be able to do supervised GCSE work, learn things that they may have forgotten or failed to understand properly in the first instance, complete extra revision or coursework.

Please note that if your child cannot arrange transport home following an additional class a school minibus option will be made available where possible to get your child home safely.

The school runs 'holiday' classes during the February and May half terms and the Easter holiday period.

These are for 'catch up' or revision purposes. We inform parents/carers in advance of those students whose work is, in the judgement of the school, in need of further attention. For those students, the expectation is that parents/carers will ensure their attendance.

THE GENERAL DATA PROTECTION ACT 2018: HOW WE USE YOUR INFORMATION

Individuals have a right to be informed about how the school uses any personal data that we hold about them and the reasons we may do so. Our Data Privacy Notices (explaining how we collect, store and use personal data) and GDPR Policy can be found at:

<https://swiftacademies.org.uk/privacy-data-protection/>

Complaints

We take any complaints about our collection and use of personal information very seriously. If you have a query regarding information we hold or how we process it you may be able to find useful information within our Policy or Privacy Notices.

If you think that our collection or use of personal information is unfair, misleading or inappropriate, or have any other concern about our data processing, please raise this with our Data Protection Officer.

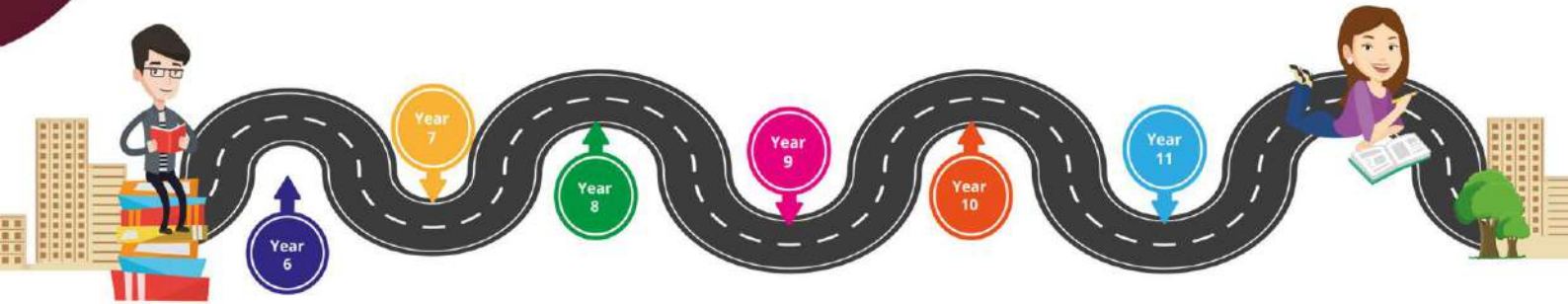
Our Data Protection Officer is Mrs S Jones who is contactable via sis@swiftacademies.org.uk

Alternatively, a suite of information is available on the Information Commissioner's Office (ICO) website:

<https://ico.org.uk/>

If you wish to make a complaint to the Information Commissioner's Office please contact:

- Report a concern online at <https://ico.org.uk/concerns/>
- Call 0303 123 1113
- Or write to: Information Commissioner's Office, Wycliffe House, Water Lane, Wilmslow, Cheshire, SK9 5AF



Croft Road
Hurworth-on-Tees
Darlington
Co Durham
DL2 2JG

T: 01325 720424 / 721188

E: enquiries@hurworth.swiftacademies.org.uk

W: <https://hurworth.swiftacademies.org.uk>